

World's Largest Cargo Ship...

The ship is named Emma Maersk and was built in three, perhaps as many as five, sections. The sections floated together and then welded. The command bridge is higher than a 10-story building and has 11 crane rigs that can operate simultaneously.

Think it's big enough? It can hold 15,000 containers and has a 207' beam! This ship is longer than a US Aircraft Carrier which has a complement of 5,000 men and officers. A 207' beam means it was NOT designed for The Panama or Suez Canal. It is strictly Trans-Pacific. Check out the "cruise speed." 31 knots means the goods arrive 4 days before the typical container ship (18-20 knots) on a China-to-California run. So this Behemoth is hugely competitive carrying perishable goods.

Additional info:

Country of origin – Denmark
Length - 1,302 ft , Width - 207 ft
Net cargo - 123,200 (?) tons
Engine - 14 in-line cylinders
diesel engine (110,000 BHP)

Crew - 13 people First Trip - Sept. 08, 2006;
Cargo capacity - 15,000 TEU
Construction cost - US \$145,000,000+
Cruise Speed - 31 Knots

Silicone painting applied to the ship bottom reduces water resistance and saves 317,000 gallons of diesel per year.

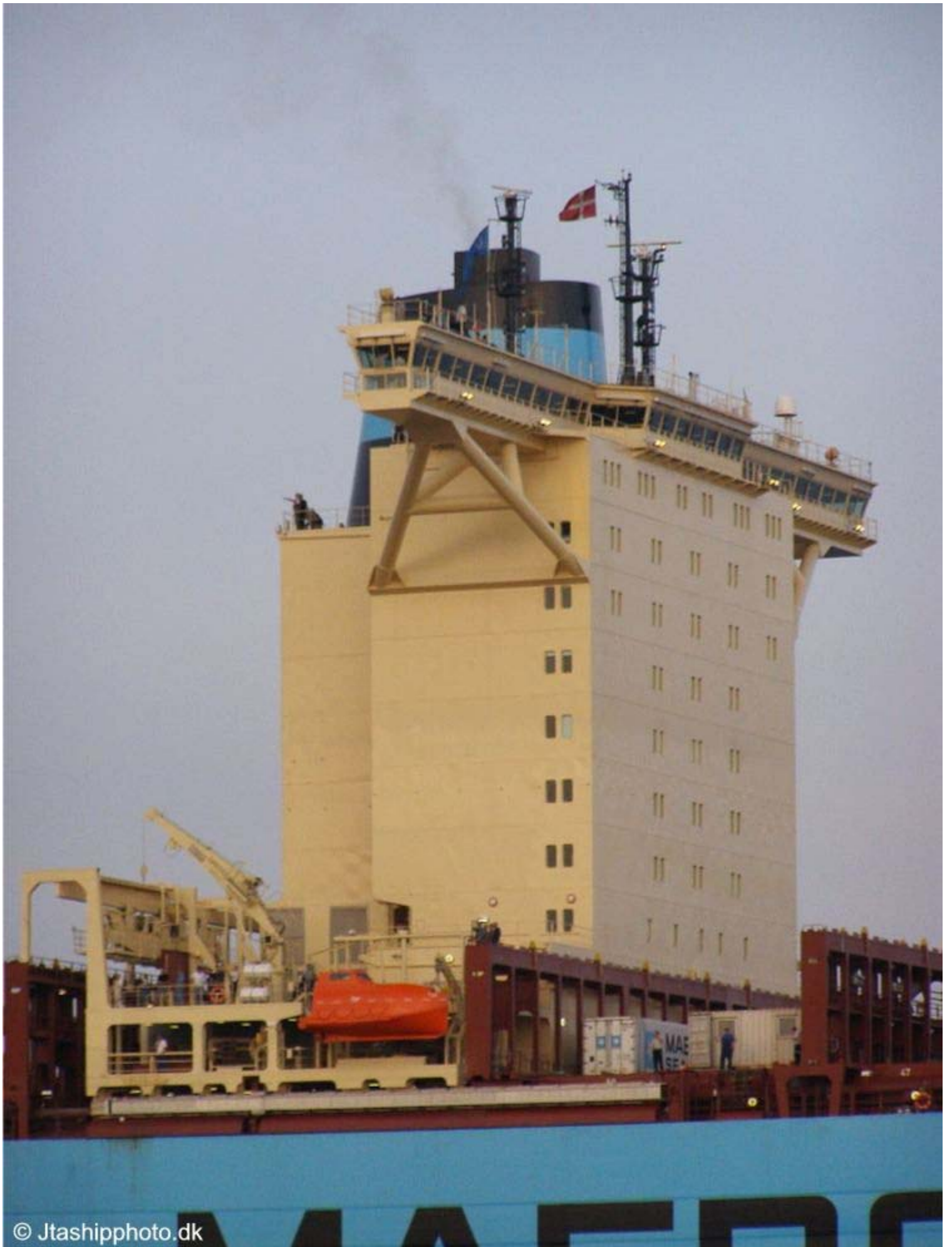




© Jtashipphoto.dk



© Jtashipphoto.dk





© Jtashipphoto.dk



